




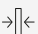


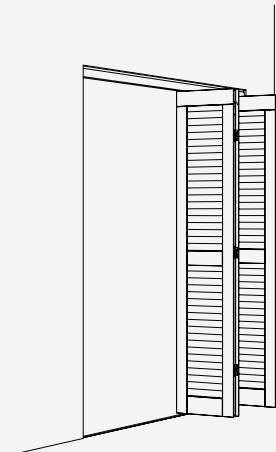
Fitting for 2–10 folding sliding shutters made of wood or metal up to 30 kg (66 lbs.) per shutter and 180 kg ((397 lbs.) per system, with visible running track and concealed guide track. Design Mixslide, open at the top.

Product highlights

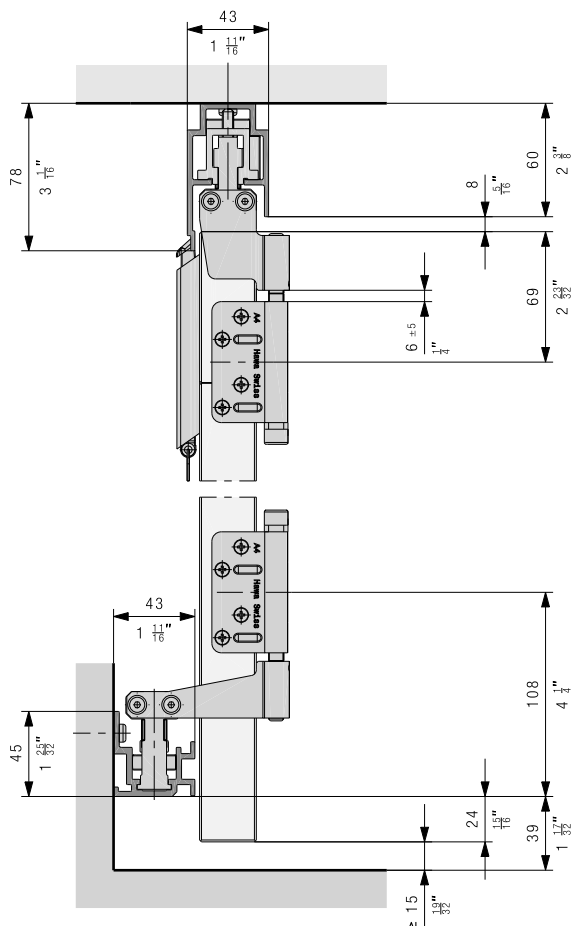
- 
Flexibility Solution for any construction situation with doors of up to 1.2 m² (13 ft²) and 30 kg (66 lbs.), even/odd number of doors and system width of up to 12 m (39' 4 7/16")
- 
Reliability Corrosion-resistant materials for use in coastal areas without reservations

Technical specifications

-  Max. 30 kg (66 lbs.)
-  Max. 3200 mm (10'5 31/32")
-  Max. 600 mm (1'11 5/8")
-  28–36 mm (1 3/32"–1 13/32")



Installation examples



Set for folding packages

		No.
	Hawa Frontfold 30 MS, basic set right, guide track open at the top	27564
	Hawa Frontfold 30 MS, basic set left, guide track open at the top	27565
	Hawa Frontfold 30 MS, additional set, guide track open at the top	27566


Set consisting of:		27564	27565	27566	No.
	Fixed suspension, Inslide, folding to the right	1			27523
	Running gear outside, Inslide, folding to the right	1			27524
	Fixed guide, Forslide, folding to the right, guide track open at the top	1			27533
	Outside guide, Forslide, folding to the right, guide track open at the top	1			27534
	Cylinder screw, M8x100 mm, A4-70	4	4	2	27401
	Hinge ring, plastic	2	2	1	15740
	Hinge plate cranked, one-piece, stainless steel A4	4	4		27418
	Fixed suspension, Inslide, folding to the left		1		27522
	Running gear outside, Inslide, folding to the left		1		27525
	Fixed guide, Forslide, folding to the left, guide track open at the top		1		27532
	Outside guide, Forslide, folding to the left, guide track open at the top		1		27535
	Centre running gear, Inslide			1	27526
	Centre guide, Forslide, guide track open at the top			1	27537
	Hinge plate cranked, two pieces, stainless steel A4			4	27419

Set for uneven number of leaves

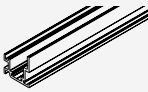


	No.
Hawa Frontfold 30 MS oo, set for uneven number of leaves left	30172
Hawa Frontfold 30 MS oo, set for uneven number of leaves right	30174

Set consisting of:			No.	
	30172	30174		
	Fixed suspension, Inslide, folding to the left	1	27522	
	Fixed guide, Forslide, folding to the left, guide track open at the top	1	27532	
	Hinge plate cranked, one-piece, stainless steel A4	2	2	27418
	Cylinder screw, M8x100 mm, A4-70	2	2	27401
	Hinge ring, plastic	1	1	15740
	Fixed suspension, Inslide, folding to the right		1	27523
	Fixed guide, Forslide, folding to the right, guide track open at the top		1	27533



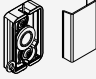





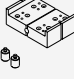
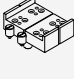


Running tracks

		mm (inch)	No.
	Running track, Inslide, aluminum, anodized	6000 (19'8 7/32")	27362
		cut to size	27624

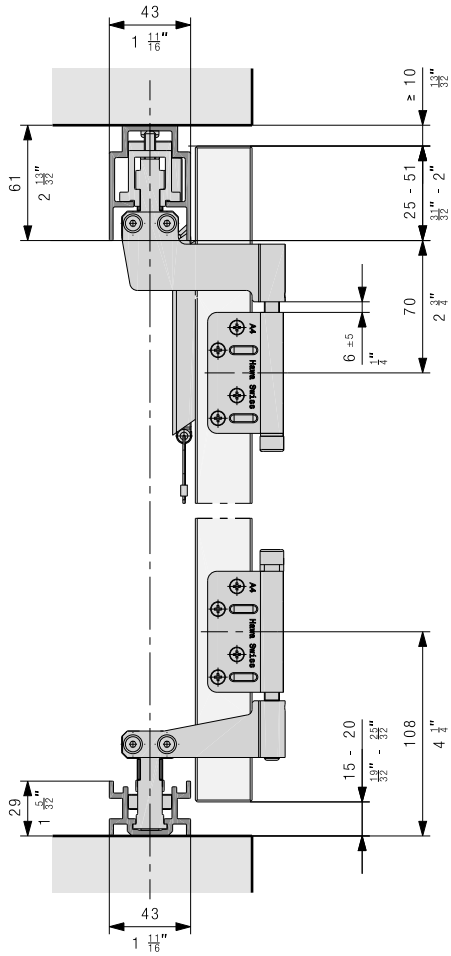
Guide tracks

		mm (inch)	No.
	Guide track, wall mounting, aluminum, anodized	6000 (19'8 7/32")	27364
		cut to size	27625
	Guide track, floor mounting, aluminum, anodized	6000 (19'8 7/32")	27366
		cut to size	27626
	Guide track, narrow, aluminum, anodized	6000 (19'8 7/32")	27368
		cut to size	27627

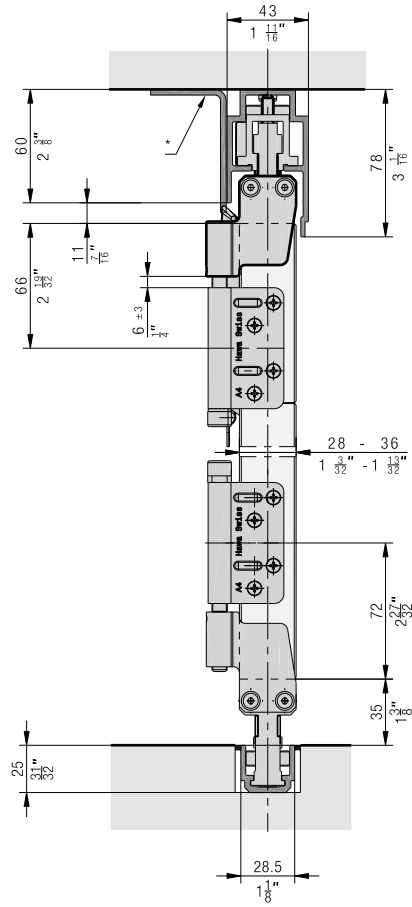
Accessories

		No.
	Tension latch, opening outwards, with steel cable, without fixing screws	27490
	Tension latch, opening inwards, with steel cable, without fixing screws	27491
	Rotary handle for tension latch, stainless steel	27458
	Flat hinge, gap size 1–6 mm (1/32" to 1/4"), stainless steel A4	27421
	Cranked hinge, gap size 6 mm (1/4"), stainless steel A4	27595
	Hinge plate cranked, two pieces, stainless steel A4	27419
	Hinge plate flat, two pieces, stainless steel A4	27420
	Hinge pin A4	20187
	Drilling jig for hinge, Ø 3mm (1/8") for screw fixing, including threaded bolt	27551
	Drilling jig for hinge, Ø 5mm (3/16") for riveting, including threaded bolt	27552
	Stopper with adjusting screw, suitable for profile bar 8 mm (5/16") from the espagnolette locking device	15899
	Strike plate, stainless steel, A4 to pull latch folding inwards	30464

Guide track, floor mounting



Running track folding inwards



* Strike plate 30464 or on-site strike plate

Guide track embedded in the floor

