







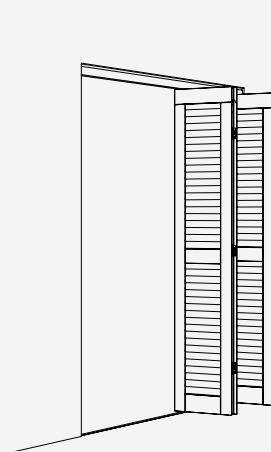
Fitting for 2–10 folding sliding shutters made of wood or metal up to 30 kg (66 lbs.) per shutter and 180 kg ((397 lbs.) per system, with visible running track and concealed guide track. Design Mixslide, open at the bottom.

**Product highlights**

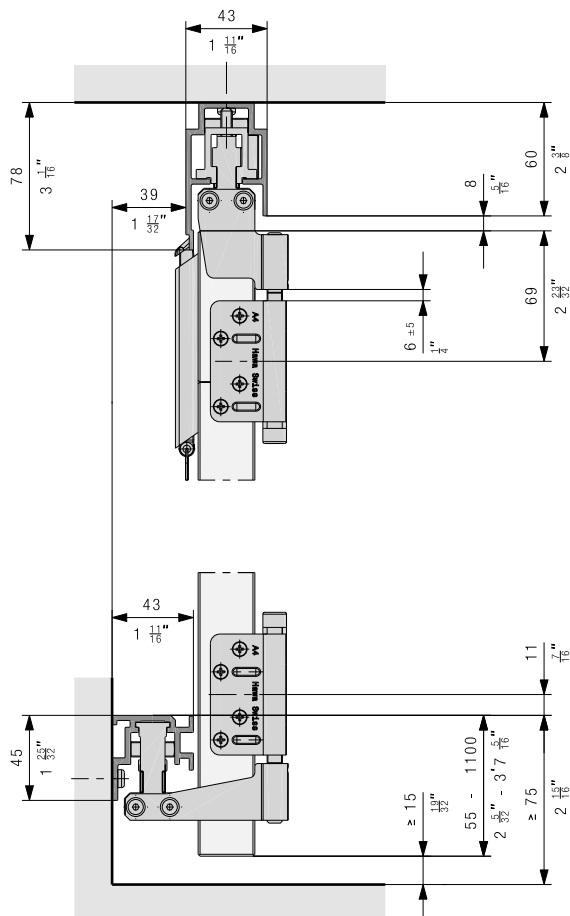
- 
**Flexibility** Solution for any construction situation with doors of up to 1.2 m<sup>2</sup> (13 ft<sup>2</sup>) and 30 kg (66 lbs.), even/odd number of doors and system width of up to 12 m (39' 4 7/16")
- 
**Reliability** Corrosion-resistant materials for use in coastal areas without reservations

**Technical specifications**

-  Max. 30 kg (66 lbs.)
-  Max. 3200 mm (10'5 31/32")
-  Max. 600 mm (1'11 5/8")
-  28–36 mm (1 3/32"–1 13/32")



**Installation examples**



**Set for folding packages**

		No.
	Hawa Frontfold 30 MS, basic set, right, guide track open at the bottom	27561
	Hawa Frontfold 30 MS, basic set, left, guide track open at the bottom	27562
	Hawa Frontfold 30 MS, additional set, guide track open at the bottom	27563

**Set consisting of:**

		27561	27562	27563	No.
	Fixed suspension, Inslide, folding to the right	1			27523
	Running gear outside, Inslide, folding to the right	1			27524
	Fixed guide, Forslide, folding to the right, guide track open at the bottom	1			27528
	Outside guide, Forslide, folding to the right, guide track open at the bottom	1			27529
	Cylinder screw, M8x100 mm, A4-70	4	4	2	27401
	Hinge ring, plastic	2	2	1	15740
	Hinge plate cranked, one-piece, stainless steel A4	4	4		27418
	Fixed suspension, Inslide, folding to the left		1		27522
	Running gear outside, Inslide, folding to the left		1		27525
	Fixed guide, Forslide, folding to the left, guide track open at the bottom		1		27527
	Outside guide, Forslide, folding to the left, guide track open at the bottom		1		27530
	Centre running gear, Inslide			1	27526
	Centre guide, Forslide, guide track open at the bottom			1	27531
	Hinge plate cranked, two pieces, stainless steel A4			4	27419

**Set for uneven number of leaves**

	No.
Hawa Frontfold 30 MS uo, set for uneven number of leaves left	30170
Hawa Frontfold 30 MS uo, set for uneven number of leaves right	30171

**Set consisting of:**

		30170	30171	No.
	Fixed suspension, Inslide, folding to the left	1		27522
	Fixed guide, Forslide, folding to the left, guide track open at the bottom	1		27527
	Hinge plate cranked, one-piece, stainless steel A4	2	2	27418
	Cylinder screw, M8x100 mm, A4-70	2	2	27401
	Hinge ring, plastic	1	1	15740
	Fixed suspension, Inslide, folding to the right		1	27523
	Fixed guide, Forslide, folding to the right, guide track open at the bottom		1	27528

**Running tracks**

		mm (inch)	No.
	Running track, Inslide, aluminum, anodized	6000 (19'8 7/32")	27362
		cut to size	27624

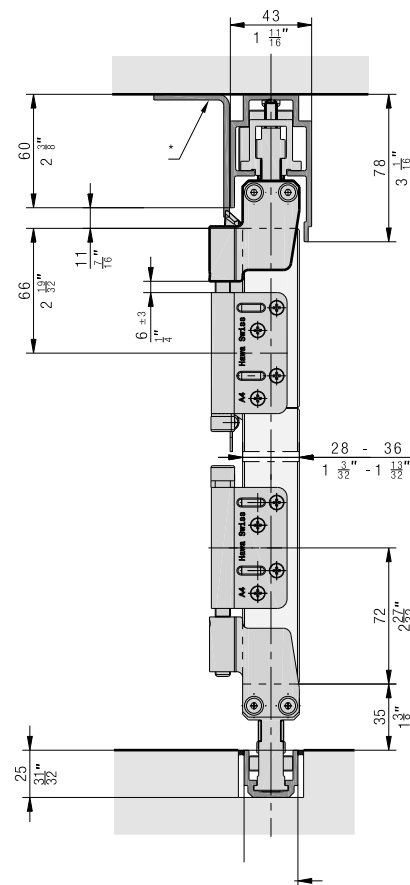
**Guide tracks**

		mm (inch)	No.
	Guide track, wall mounting, aluminum, anodized	6000 (19'8 7/32")	27364
		cut to size	27625
	Guide track, floor mounting, aluminum, anodized	6000 (19'8 7/32")	27366
		cut to size	27626
	Guide track, narrow, aluminum, anodized	cut to size	27627

Accessories

		No.
	Tension latch, opening outwards, with steel cable, without fixing screws	27490
	Tension latch, opening inwards, with steel cable, without fixing screws	27491
	Rotary handle for tension latch, stainless steel	27458
	Flat hinge, gap size 1-6 mm (1/32" to 1/4"), stainless steel A4	27421
	Cranked hinge, gap size 6 mm (1/4"), stainless steel A4	27595
	Hinge plate cranked, two pieces, stainless steel A4	27419
	Hinge plate flat, two pieces, stainless steel A4	27420
	Hinge pin A4	20187
	Drilling jig for hinge, Ø 3mm (1/8") for screw fixing, including threaded bolt	27551
	Drilling jig for hinge, Ø 5mm (3/16") for riveting, including threaded bolt	27552
	Stopper with adjusting screw, suitable for profile bar 8 mm (5/16") from the espagnolette locking device	15899
	Strike plate, stainless steel, A4 to pull latch folding inwards	30464

Running track folding inwards

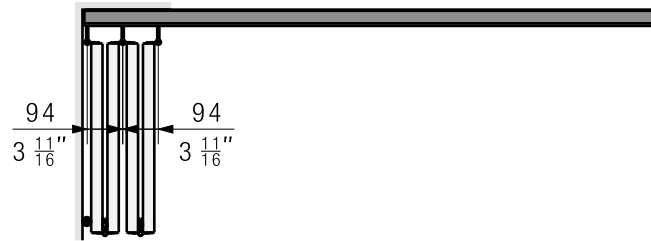


\* Strike plate 30464 or on-site strike plate

**Planning folding package**

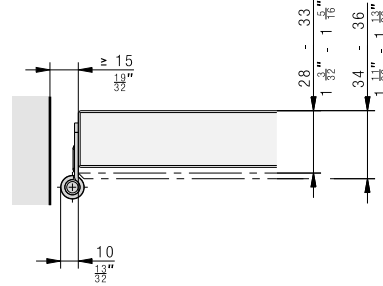
Customer installation of a wind support is recommended.

With an odd number of doors, the last door must be secured by the customer.

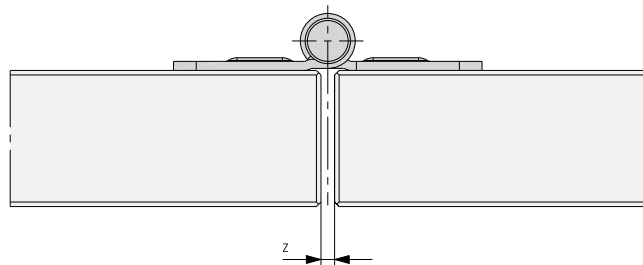


**Running gear and guide hinge**

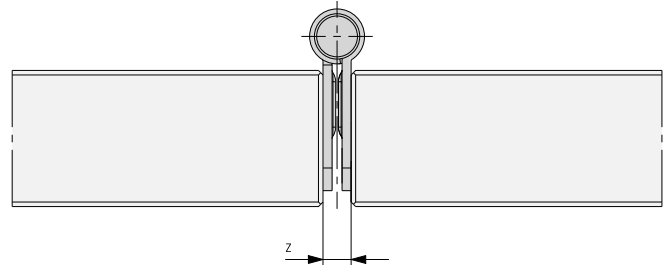
With folding sliding shutters more than 33 mm (1 5/16") thick, the hinges must be embedded.



**Options folding hinges**

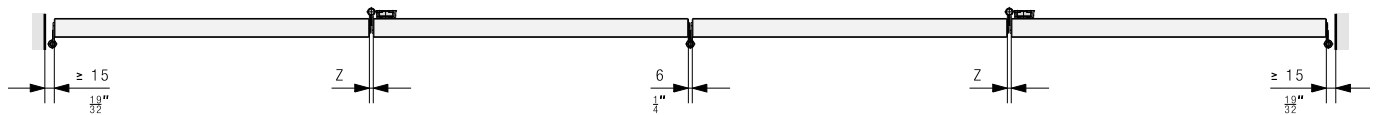


Variant 1, flat hinge: Z = 1–6 mm (1/32" to 1/4")



Variant 2, cranked hinge: Z = 6 mm (1/4")

**Gap sizes**



**Number of hinges**

Height	Quantity
up to 2000 mm	2
from 2001 mm	3

**Ordering information**

- Type and number of sets
- Type and number of hinges
- Type and number of tension latches and rotary handles
- Type and number of running tracks
- Type and number of guide tracks

**Optional ordering information**

- Type and number of drilling jigs
- Order overview from page 194

**Planning/execution**

Further information about the product can be found on [www.hawa.com](http://www.hawa.com).